



McKnight Lane: 14 zero-energy VERMOD homes

- Parklike setting on the banks of Otter Creek
- Pedestrian access to downtown Vergennes with planned sidewalk expansion
- (10) 2 bed/1bath homes
 - (2) 3 bed/1 bath homes
 - (2) 2 bed/1 bath ADA accessible homes
- Ready for occupancy in late 2016
- Monthly rent of \$775 (2 bedroom homes) or \$850 (3 bedroom home) includes basic utilities, trash, recycling, and snow removal. Washer and dryer included with home.
- Maximum household income:
 - 1 Person Household: \$29,820
 - 2 Person Household: \$34,080
 - 3 Person Household: \$38,340
 - 4 Person Household: \$42,600
- Section 8 vouchers accepted.

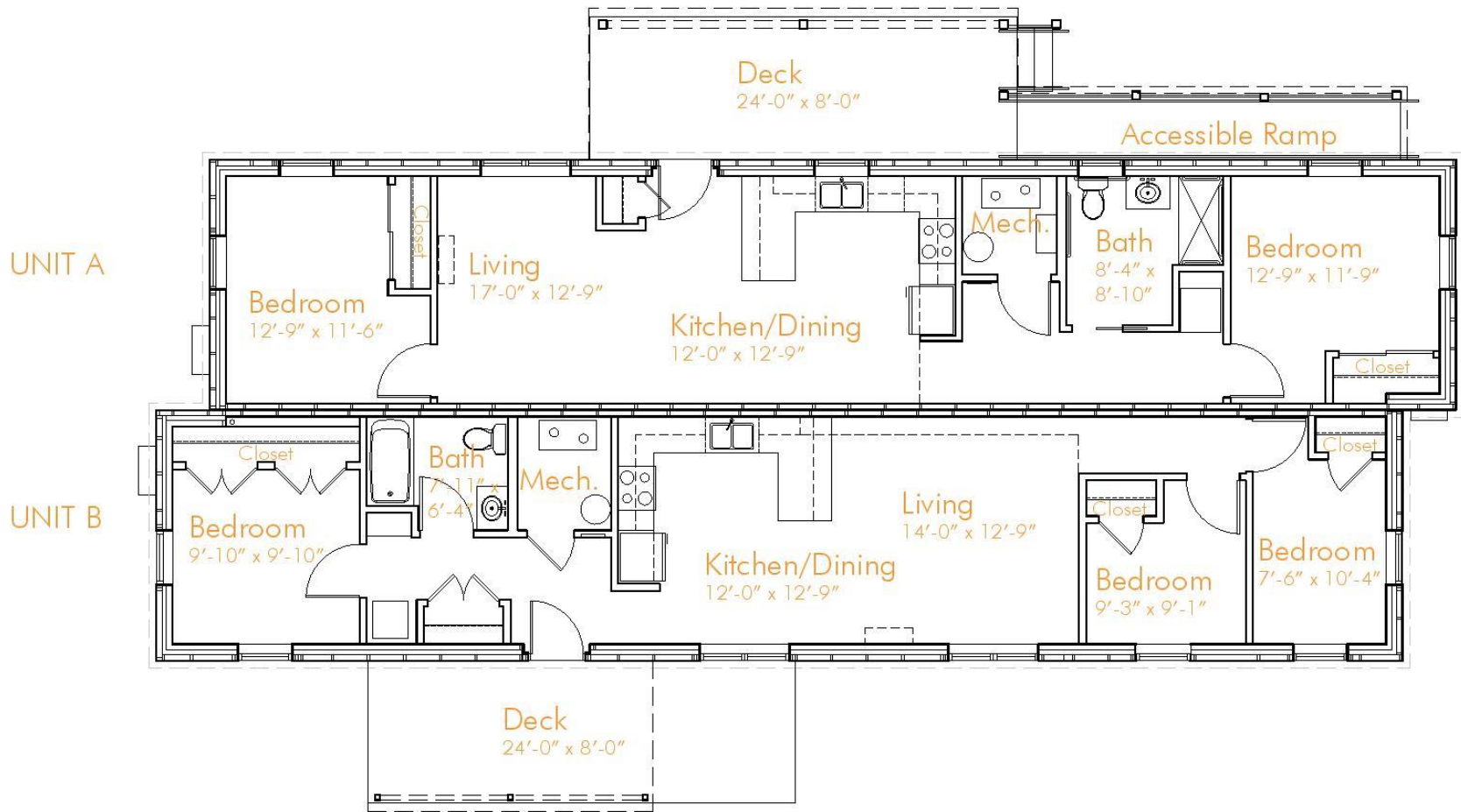
2 bed / 1 bath home & 3 bed / 1 bath home

Back - to -Back Units

-Unit A- Accessible home, ADA clearances & ramp

-Unit B- 3 bed, 1 bath home

-Each unit 70' x 14'



McKnight Lane: 14 zero-energy VERMOD homes

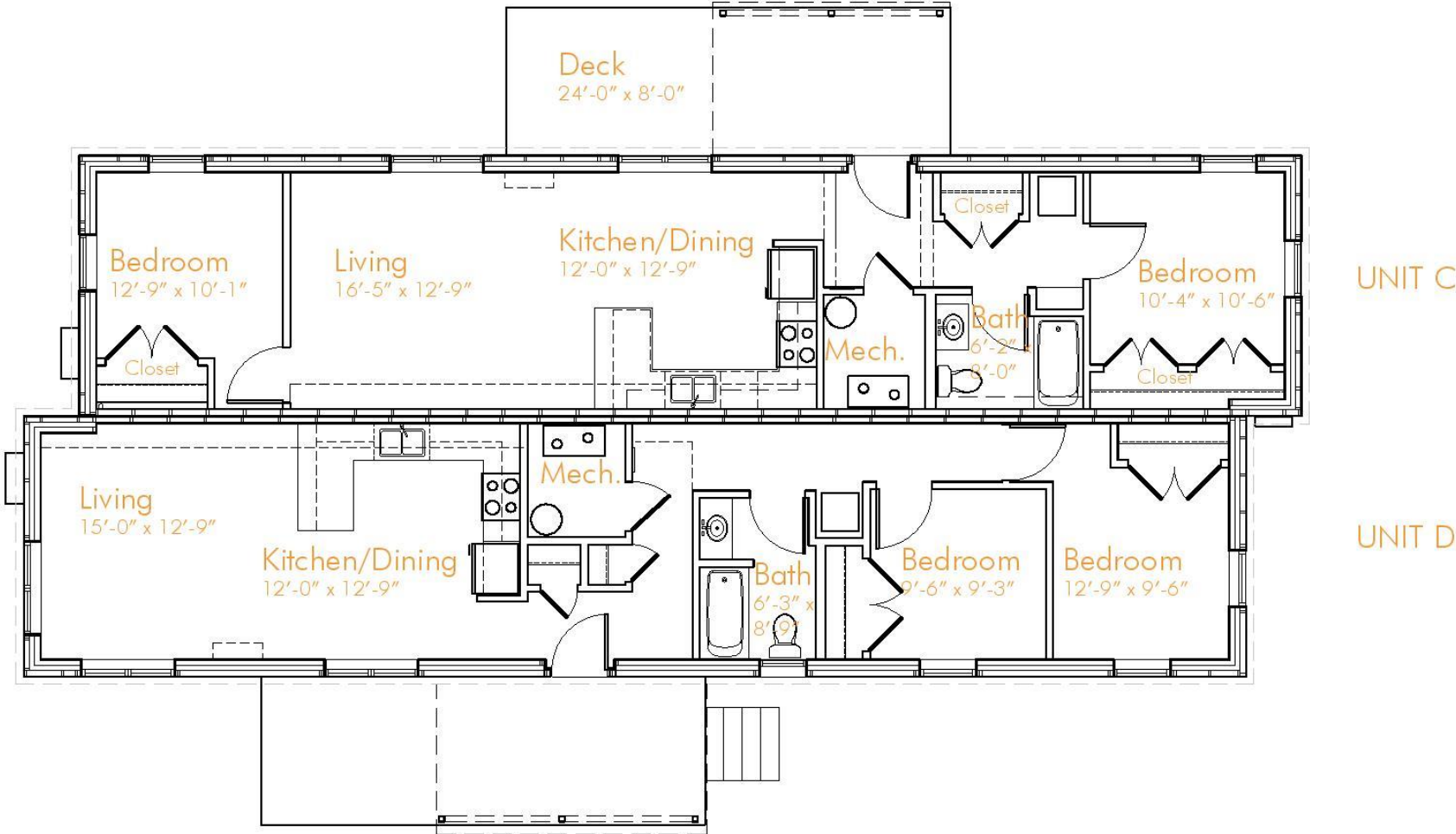
2 bed / 1 bath home

Back - to -Back Units

-Unit C: Bedrooms on either end of unit

-Unit D: Livingroom on end of unit

-Each unit 66' x 14'



McKnight Lane: 14 zero-energy VERMOD homes



BEFORE: Gevry's Trailer Park



AFTER: McKnight Lane

McKnight Lane

An Addison County Community Trust Project

Owner :

**McKnight Lane
Limited Partnership**

Developer :



Technical Assistance :



Contractor and Engineer:



Architect and Home Manufacturer :

**Pill-Maharam Architecture and
Vermod (High Performance Modular Homes)**

Development Consultant :

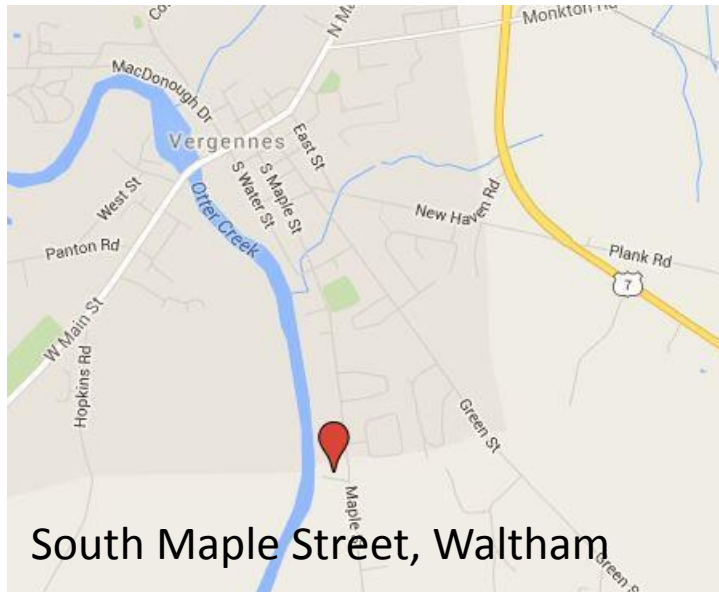
J.D.Kantor, Inc.

A Partnership with People's United Bank

Financing Provided by : Vermont Community Development Program, Vermont Housing Finance Agency, HOME Investment Partnership Program, Vermont Housing and Conservation Board, Efficiency Vermont, Agency of Commerce and Community Development, Vermont Community Loan Fund, Vermont Department of Environmental Conservation, Renewable Energy Resource Center, Vermont Low Income Trust for Electricity, Inc., National Association of Realtors, and in kind support from the Town of Waltham



For rental information, please contact Addison County Community Trust at 802-877-2626



South Maple Street, Waltham

**Efficiency
Vermont**

